

# Anticipated Summer Season

May 28 - October 9, 2022 | Sunset Lift  
Saturdays & Sundays | 10:00am - 4:30pm

Starting June 17, 2022 | Sunset Lift  
Fridays | 12:00 - 7:00pm  
Saturdays & Sundays | 10:00am - 4:30pm

\*We will be closed July 1st-3rd  
in recognition of the July 4th Holiday.



 [HOLIMONT.COM](https://holimont.com)

 716.699.2320

 @HOLIMONT



## Explore Membership

HoliMont offers exclusivity at an affordable price without the hype, attitudes or crowds.



SCAN ME

Learn more about Membership.

## Contact Information

Information .....	716.699.2320
Slope Report .....	877.754.4654
Gear•Up Rentals .....	716.699.5582
Snowsport School .....	716.699.8159
Racing .....	716.699.5306
HoliMont Fax .....	716.699.5029
HoliMont Realty .....	716.699.2826

[HOLIMONT.COM](https://holimont.com)

## BIKE PARK

### Summer Lift Tickets

Lift prices for non-members

Daily Lift Access.....	\$25
Season Pass .....	\$250

These summer lift tickets are priced for the public only. One of the benefits to membership is that you always have access!

[HOLIMONT.COM/MEMBERSHIP](https://holimont.com/membership)



### Adventure Awaits

Link to 35+ miles trail system in State Forest, Finger Lakes Trail, and IMBA Epic! The IMBA EPICS designation denotes a true backcountry riding experience. Ellicottville Loop Epic is 30+ miles of eastern singletrack.



# HOLIMONT Bike Park

Machine Built Trails  
Riding for the Whole Family  
Outdoor Experiences for All

[HOLIMONT.COM](https://holimont.com)





# Bike Park Trail Signs & Definitions

## Technical Terrain

Technical trails are designed and built to utilize a majority of natural terrain. This terrain includes, but is not limited to the following: gravel, pot holes, rocks, roots, boulders, logs, water crossings and other natural or constructed features.



### GETSMART

**START SMALL**  
Work your way up. Take a lesson.

**MAKE A PLAN**  
Every feature. Every time.

**ALWAYS LOOK**  
Scope, test, ride.

**RESPECT**  
The features and other riders.

**TAKE IT EASY**  
Know your limits. Land on your wheels.

## TECHNICAL TERRAIN DESIGNATION



## Freeride Terrain

HoliMont Freeride terrain consists of natural and constructed features. This terrain includes, but is not limited to the following: jumps, ride-on features, jump-on features, gaps, narrow surfaces, quarterpipes, half pipes, and other natural or constructed features.

## FREERIDE TERRAIN DESIGNATION



**PATROL & FIRST AID**  
In the event of an emergency call 911



**NO BIKES**



**CAUTION**



**TRAIL CLOSED**



**SLOW**

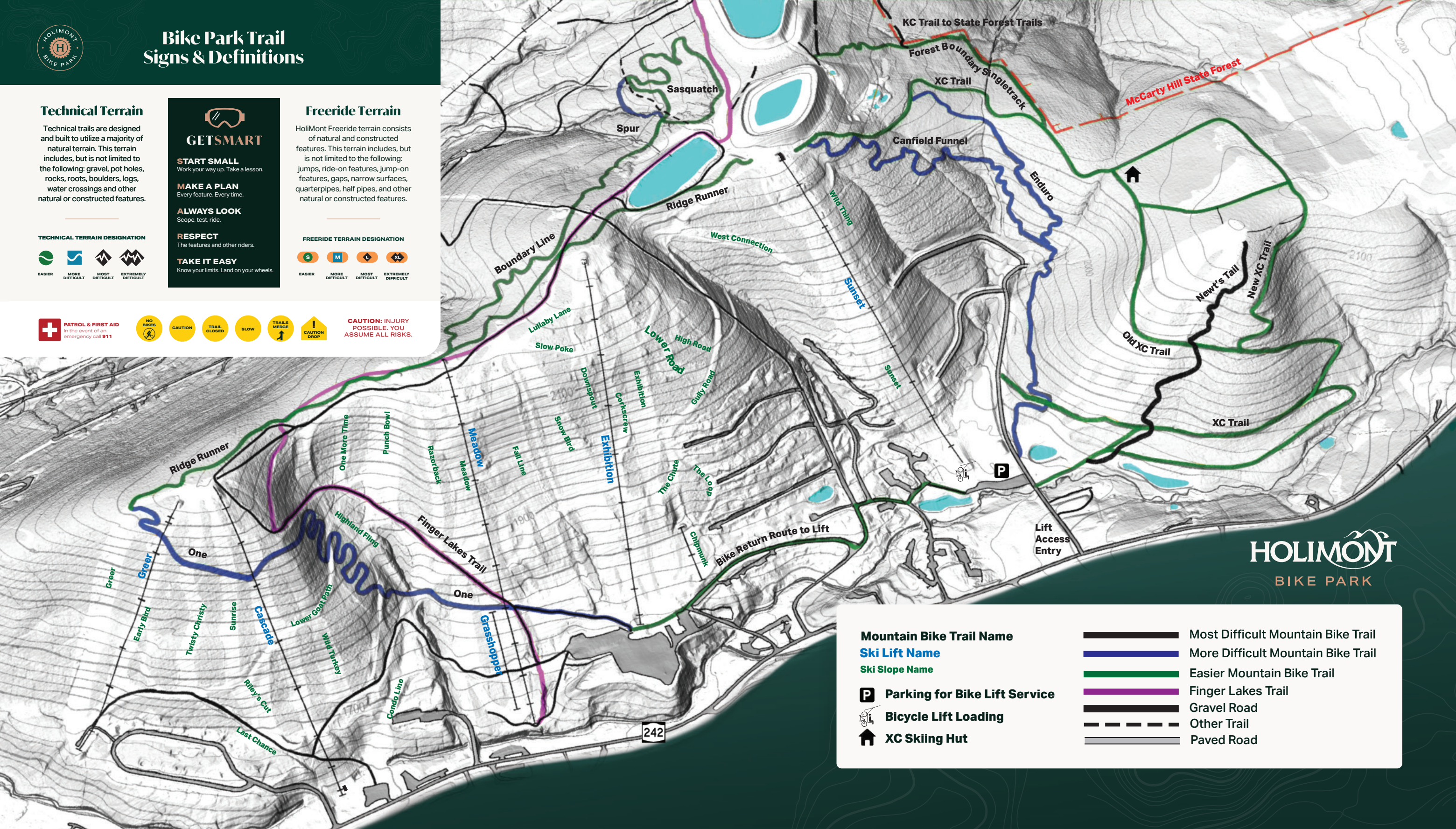


**TRAILS MERGE**



**CAUTION DROP**

**CAUTION: INJURY POSSIBLE. YOU ASSUME ALL RISKS.**



**HOLIMONT**  
BIKE PARK

## Mountain Bike Trail Name

**Ski Lift Name**

**Ski Slope Name**

**P Parking for Bike Lift Service**

**Bicycle Lift Loading**

**XC Skiing Hut**

- Most Difficult Mountain Bike Trail
- More Difficult Mountain Bike Trail
- Easier Mountain Bike Trail
- Finger Lakes Trail
- Gravel Road
- Other Trail
- Paved Road